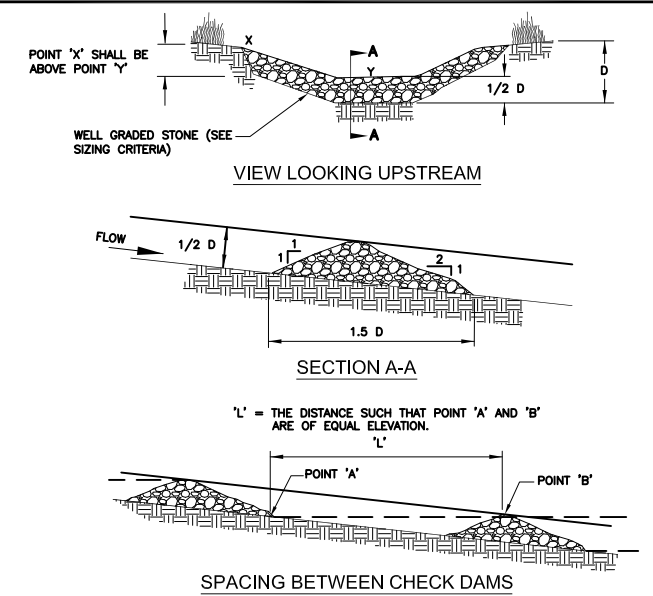


- DIVERSION DIKE GENERAL NOTES:**
1. ALL DIKES SHALL BE PLACED IN 8" LIFTS OR LESS AND COMPACTED TO 95% STANDARD PROCTOR DENSITY.
 2. ALL DIVERSION DIKES SHALL HAVE POSITIVE DRAINAGE TO A CONTROLLED OUTLET.
 3. DIVERTED RUNOFF FROM A PROTECTED OR STABILIZED AREA SHALL HAVE ITS OUTLET FLOW DIRECTED TO AN UNDISTURBED STABILIZED AREA OR INTO A LEVEL SPREADER OR GRADE STABILIZATION STRUCTURE.
 4. DIVERTED RUNOFF FROM A DISTURBED OR EXPOSED AREA SHALL BE CONVEYED TO SEDIMENT TRAPPING DEVICE.
 5. FOR GRADES LESS THAN 2% AND VELOCITIES LESS THAN 6 FEET PER SECOND, THE MINIMUM REQUIRED CHANNEL STABILIZATION SHALL BE GRASS, EROSION CONTROL MATS OR MULCHING. FOR GRADES IN EXCESS OF 2 PERCENT OR VELOCITIES EXCEEDING 6 FEET PER SECOND, STABILIZATION IS REQUIRED IN THE FORM OF TURF REINFORCEMENT MATS (OR A LAYER OF CRUSHED STONE OR RIP-RAP WITH APPROPRIATE SIZE, GRADATION, AND THICKNESS AS SPECIFIED IN THE SWPPP).
 6. INSPECTION SHALL BE AS SPECIFIED IN THE SWPPP.

DIVERSION DIKE DETAIL
N.T.S.

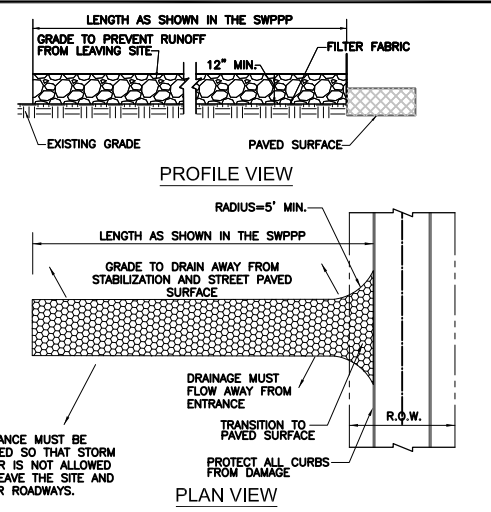
DATE: JUNE 2015
STANDARD DETAIL: 605
 NO ADDITIONS OR CHANGES SHALL BE MADE TO THE STANDARD DETAIL SHEETS UNLESS APPROVED BY THE CITY OF WILLOW PARK.
 CITY OF WILLOW PARK, PARKER COUNTY, TEXAS
 516 Ranch House Road • Willow Park, Texas 76087
 Phone: 817-441-7108 • Fax: 817-441-6900



- ROCK CHECK DAM GENERAL NOTES:**
1. STONE SHALL BE WELL GRADED WITH A SIZE RANGE FROM 1-1/2 TO 3-1/2 INCHES IN DIAMETER DEPENDING ON EXPECTED FLOWS.
 2. THE CHECK DAM SHALL BE INSPECTED AS SPECIFIED IN THE SWPPP AND SHALL BE REPLACED WHEN THE STRUCTURE CEASES TO FUNCTION AS INTENDED DUE TO SILT, CONSTRUCTION, TRAFFIC, DAMAGE, ETC.
 3. WHEN SILT REACHES A DEPTH EQUAL TO ONE-THIRD OF THE HEIGHT OF THE CHECK DAM OR ONE FOOT, WHICHEVER IS LESS, THE SILT SHALL BE REMOVED AND DISPOSED OF PROPERLY.
 4. WHEN THE SITE HAS ACHIEVED FINAL STABILIZATION OR ANOTHER EROSION OR SEDIMENT CONTROL DEVICE IS EMPLOYED, THE CHECK DAM AND ACCUMULATED SILT SHALL BE REMOVED AND DISPOSED OF IN AN APPROVED MANNER.

ROCK CHECK DAM DETAIL
N.T.S.

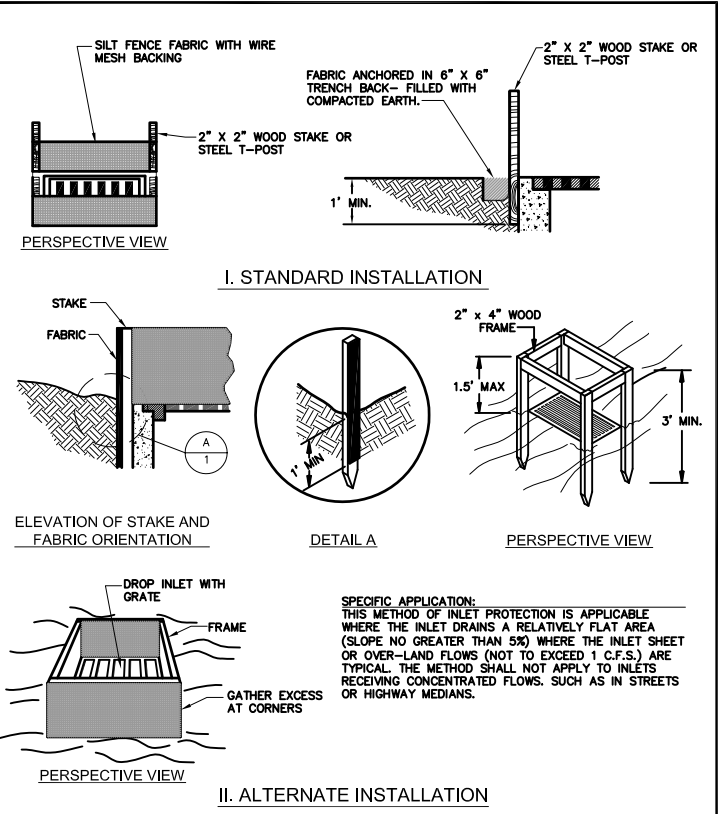
DATE: JUNE 2015
STANDARD DETAIL: 610
 NO ADDITIONS OR CHANGES SHALL BE MADE TO THE STANDARD DETAIL SHEETS UNLESS APPROVED BY THE CITY OF WILLOW PARK.
 CITY OF WILLOW PARK, PARKER COUNTY, TEXAS
 516 Ranch House Road • Willow Park, Texas 76087
 Phone: 817-441-7108 • Fax: 817-441-6900



- STABILIZED CONSTRUCTION ENTRANCE GENERAL NOTES:**
1. STONE SHALL BE 6 TO 8 INCH DIAMETER COARSE AGGREGATE.
 2. LENGTH SHALL BE AS SPECIFIED IN THE SWPPP.
 3. THE THICKNESS SHALL NOT BE LESS THAN 12 INCHES.
 4. THE WIDTH SHALL BE NO LESS THAN THE FULL WIDTH OF ALL POINTS OF INGRESS OR EGRESS.
 5. WHEN NECESSARY, VEHICLES SHALL BE CLEANED TO REMOVE ROCK AND SEDIMENT PRIOR TO ENTRANCE TO A PUBLIC ROADWAY. A CATTLE GUARD SHALL BE INSTALLED OVER A LOWERED AREA FOR WASHING WITH DRAINAGE FLOWING AWAY FROM BOTH THE STREET AND THE STABILIZED ENTRANCE. ALL SEDIMENT SHALL BE PREVENTED FROM ENTERING ANY STORM DRAIN, DITCH OR WATERCOURSE USING APPROVED METHODS.
 6. THE ENTRANCE SHALL BE MAINTAINED IN A CONDITION WHICH WILL PREVENT TRACKING OR FLOWING OF SEDIMENT ONTO PAVED SURFACES. THIS MAY REQUIRE PERIODIC TOP DRESSING WITH ADDITIONAL STONE AS CONDITIONS DEMAND. ALL SEDIMENT SPILLED, DROPPED, WASHED, OR TRACKED ONTO PAVED SURFACES MUST BE REMOVED IMMEDIATELY.
 7. THE ENTRANCE MUST BE PROPERLY GRADED OR INCORPORATE A DRAINAGE SWALE TO PREVENT RUNOFF FROM LEAVING THE CONSTRUCTION SITE.
 8. PREVENT SHORTCUTTING OF THE FULL LENGTH OF THE CONSTRUCTION ENTRANCE BY INSTALLING BARRIERS AS NECESSARY.
 9. INSPECTION SHALL BE AS SPECIFIED IN THE SWPPP.
 10. THE CURB SHALL BE PROTECTED FROM DAMAGE.

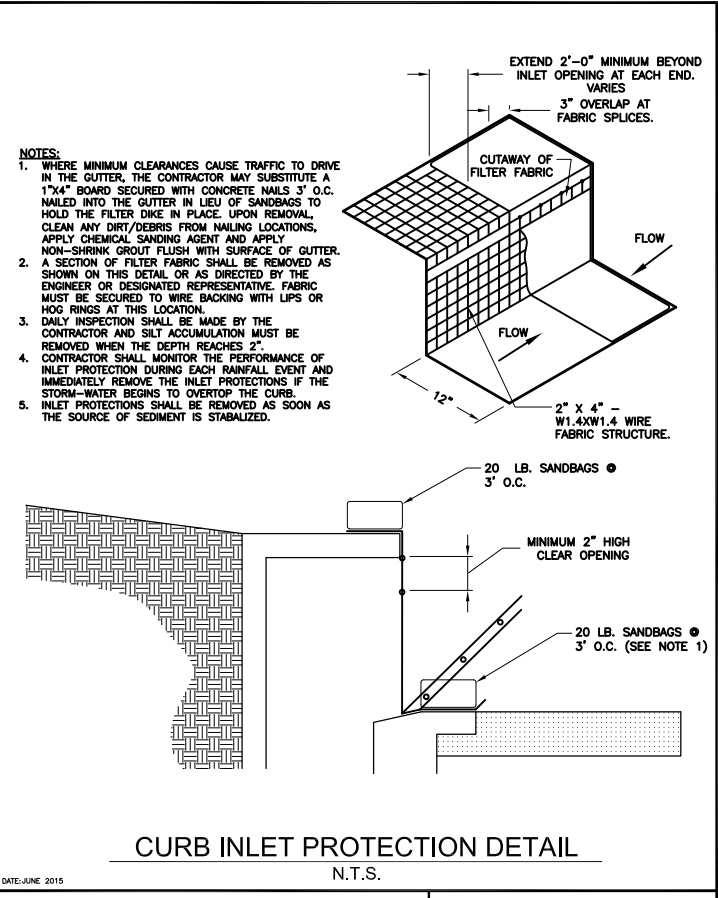
STABILIZED CONSTRUCTION ENTRANCE
N.T.S.

DATE: AUG 2015
STANDARD DETAIL: 615
 NO ADDITIONS OR CHANGES SHALL BE MADE TO THE STANDARD DETAIL SHEETS UNLESS APPROVED BY THE CITY OF WILLOW PARK.
 CITY OF WILLOW PARK, PARKER COUNTY, TEXAS
 516 Ranch House Road • Willow Park, Texas 76087
 Phone: 817-441-7108 • Fax: 817-441-6900



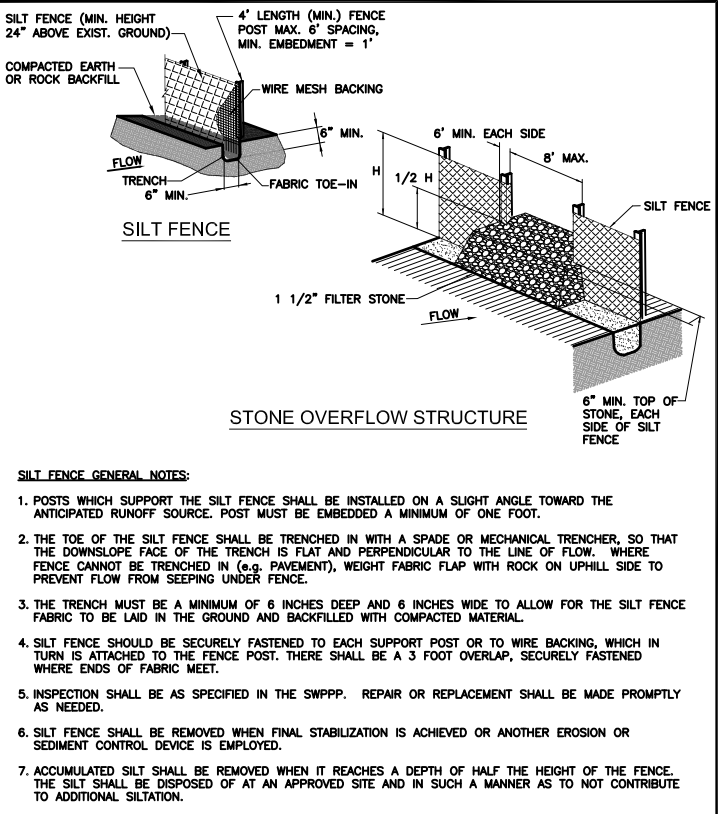
INLET PROTECTION FILTER BARRIER
N.T.S.

DATE: JUNE 2015
STANDARD DETAIL: 620
 NO ADDITIONS OR CHANGES SHALL BE MADE TO THE STANDARD DETAIL SHEETS UNLESS APPROVED BY THE CITY OF WILLOW PARK.
 CITY OF WILLOW PARK, PARKER COUNTY, TEXAS
 516 Ranch House Road • Willow Park, Texas 76087
 Phone: 817-441-7108 • Fax: 817-441-6900



CURB INLET PROTECTION DETAIL
N.T.S.

DATE: JUNE 2015
STANDARD DETAIL: 621
 NO ADDITIONS OR CHANGES SHALL BE MADE TO THE STANDARD DETAIL SHEETS UNLESS APPROVED BY THE CITY OF WILLOW PARK.
 CITY OF WILLOW PARK, PARKER COUNTY, TEXAS
 516 Ranch House Road • Willow Park, Texas 76087
 Phone: 817-441-7108 • Fax: 817-441-6900



SILT FENCE DETAIL
N.T.S.

DATE: JUNE 2015
STANDARD DETAIL: 600
 NO ADDITIONS OR CHANGES SHALL BE MADE TO THE STANDARD DETAIL SHEETS UNLESS APPROVED BY THE CITY OF WILLOW PARK.
 CITY OF WILLOW PARK, PARKER COUNTY, TEXAS
 516 Ranch House Road • Willow Park, Texas 76087
 Phone: 817-441-7108 • Fax: 817-441-6900

REVISIONS:

CITY OF WILLOW PARK, PARKER COUNTY, TEXAS
 516 Ranch House Road
 Willow Park, Texas 76087
 Phone: 817-441-7108 - Fax: 817-441-6900

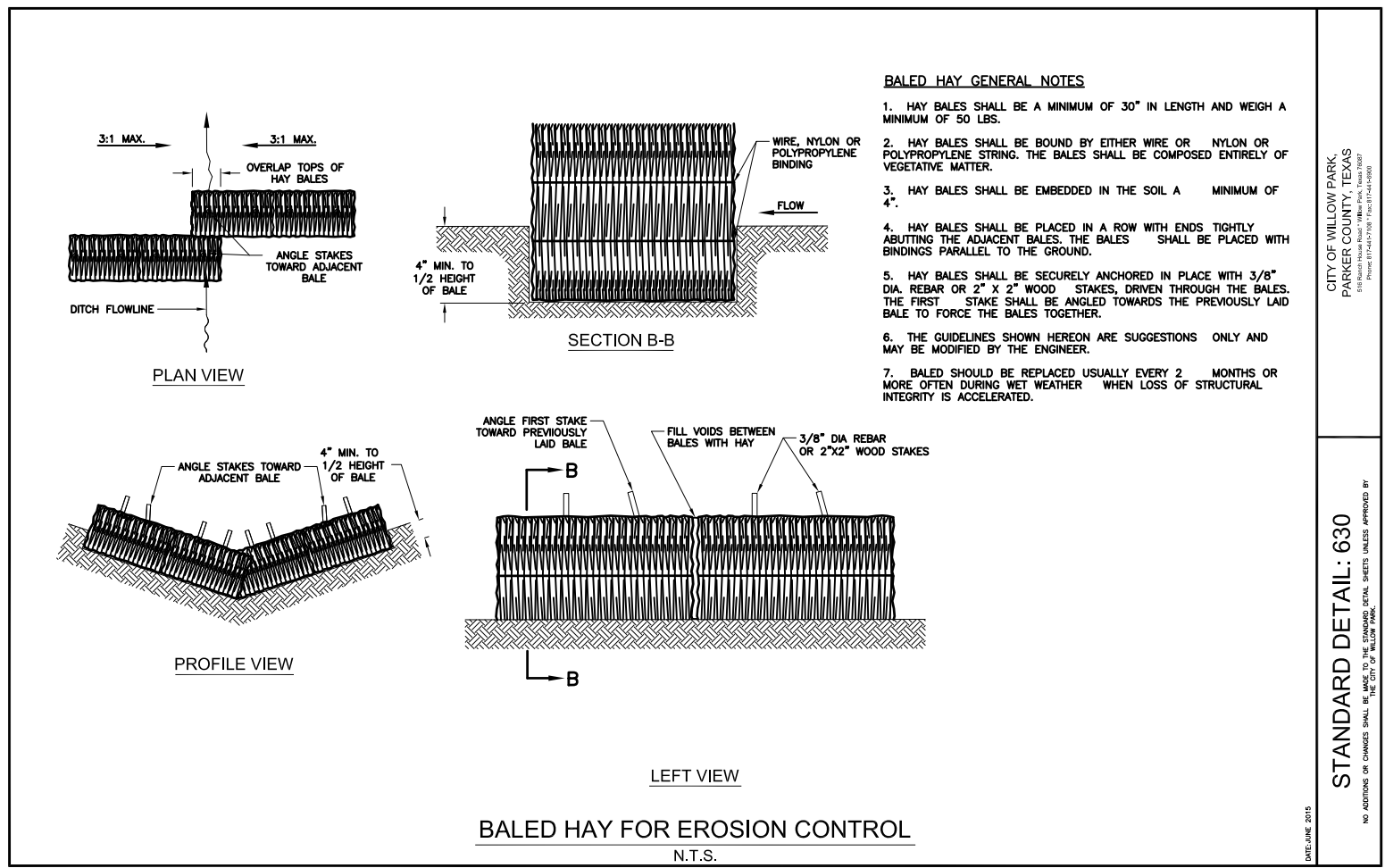
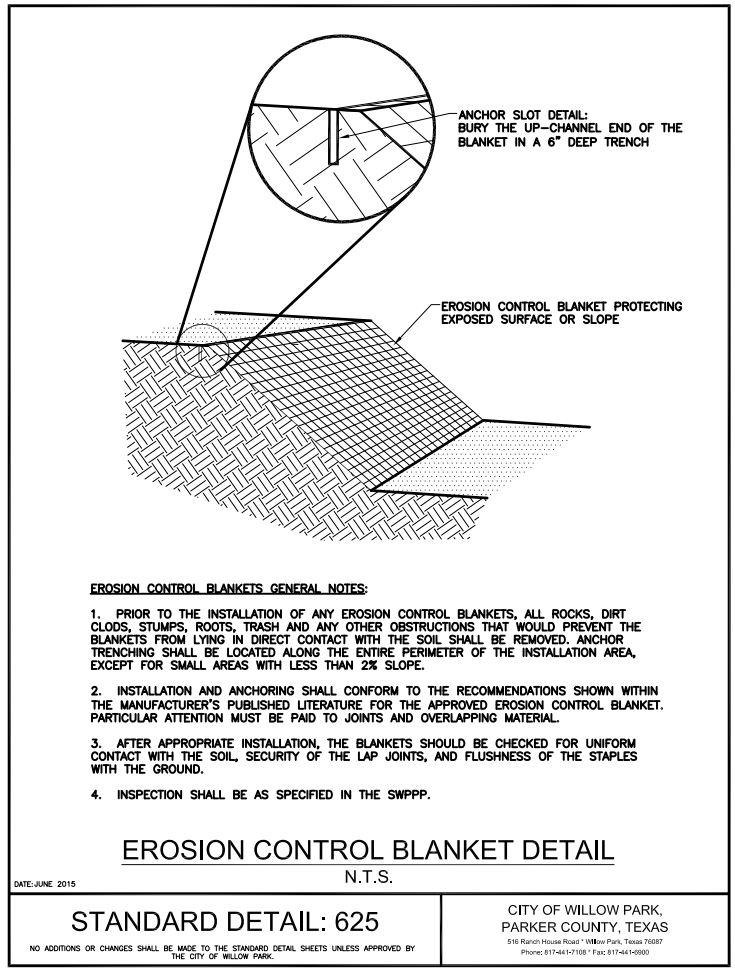
CITY OF WILLOW PARK, TEXAS
STANDARD DETAILS

| | | | | | | | | |
|---|---------------------|--------|---------------------|--------|----------------|-----------------|------------------|------------------|
| NO ADDITIONS OR CHANGES SHALL BE MADE TO THE STANDARD DETAIL SHEETS UNLESS APPROVED BY THE CITY OF WILLOW PARK. | 22x34 SCALE: N.T.S. | N.T.S. | 11x17 SCALE: N.T.S. | N.T.S. | DATE: AUG 2015 | DATE: AUG 2015 | DATE: AUG 2015 | DATE: AUG 2015 |
| | | | | | DRAWN: X.X.X. | CHECKED: X.X.X. | APPROVED: X.X.X. | APPROVED: X.X.X. |

SHEET TITLE: EROSION CONTROL DETAILS
 SHEET NO.: C-EC01

PRINTED BY: SUE ANN BOND
 PLOTTED ON: 8/12/2015 9:54 AM
 X:\C:\WILLOW_PARK\MISC\WP_STANDARD_DETAILS\600_WP_STANDARD_DETAILS_01.DWG

PRINTED BY: SUE ANN BOND PLOTTED ON: 6/3/2015 11:18 AM
 X:\C\WILLOW_PARK\MISC\WP_STANDARD_DETAILS\600\WP_STANDARD_DETAILS - EROSION CONTROL\WP_EROSION_CONTROL_01.DWG



REVISIONS:

CITY OF WILLOW PARK, PARKER COUNTY, TEXAS
 516 Ranch House Road
 Willow Park, Texas 76087
 Phone: 817-441-7108 - Fax: 817-441-6900

CITY OF WILLOW PARK, TEXAS

STANDARD DETAILS

| | |
|--------------|-----------|
| 22x34 SCALE: | N.T.S. |
| 11x17 SCALE: | N.T.S. |
| DATE | JUNE 2015 |
| DRAWN | X.X.X. |
| CHECKED | X.X.X. |
| APPROVED | X.X.X. |

NO ADDITIONS OR CHANGES SHALL BE MADE TO THE STANDARD DETAIL SHEETS UNLESS APPROVED BY THE CITY OF WILLOW PARK.

SHEET TITLE:
 EROSION CONTROL DETAILS

SHEET NO.: C-EC02